

Diagnostic Coupling, Model : MMC



the right connection
the right environment

Ref. No : H04312, Release March 2018 (Dimensions in mm)

Description

Diagnostic Couplings are intended to provide facility to access system pressure for the purpose of pressure measurement.

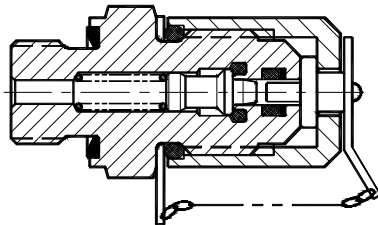
For transmitting pressure through these couplings to the measuring devices, no special tools are needed. These couplings can be connected by hand even at rated pressure.

These couplings are equipped with protective caps to avoid ingress of foreign particles, when the couplings are not in use. This is also a Safety device against vibration.

These couplings also can be used for purging air from the system.
Working Pressure 630 bar (9000 PSI) according to ISO 15171-2



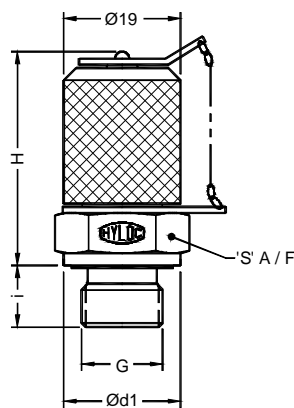
Section



Hydraulic Symbol

Unit Dimensions

For **M16 x 2.0 (1620)**, **M16 x 1.5 (1615)**
and for special thread at Hose end. (**1215**)



Stud end threads	Sealing details	Working Pressure	Ød1	i	For 1615 and 1620		For 1215	
					H	S	H	S
ISO 228 - G 1/8	Elastomeric seal (DIN 3852)	400 bar	14	8	38	17	38	14
ISO 228 - G 1/4		630 bar	19	10	35	19	29	19
ISO 228 - G 3/8		630 bar	22	10	35	22	29	22
M8 x 1.0	O-Ring (ISO 6149)	250 bar	12	8.5	40	17	38	14
M10 x 1.0	Elastomeric seal (DIN 3852)	630 bar	14	8.5	40	17	38	14
M12 x 1.5				* 9.5				
				10.0				
M14 x 1.5	O-Ring (ISO 6149)	630 bar	19	* 11.0	35	19	29	19
				10.0				
				* 11.5				
M16 x 1.5	O-Ring (ISO 6149)	630 bar	22	10.0	35	22	29	22
				* 12.5				
				10.0				
7/16"-20 UNF	O-Ring (SAE J514)	630 bar	14.1	9.0	35	17	30	17
9/16"-18 UNF			17.3	10.0				
1/8 NPTF	Self sealing threads	400 bar	--	9.7	35	17	30	14
1/4 NPTF			--	14.2				
ISO 7/1 - R 1/8	Sealing by suitable jointing solutions	400 bar	--	7.5	35	17	32	14
ISO 7/1 - R 1/4		630 bar	--	11.0				

* Marked dimensions are for stud ends with O' Ring sealing

Diagnostic Coupling, Model : MMC



the right connection
the right environment

Ref. No : H04312, Release March 2018 (Dimensions in mm)

Technical Specifications

Construction Spring loaded poppet type, opens on assembly by hose.

Materials Body Carbon steel. stainless steel on request.

Cap Carbon steel or Plastic.

Hydraulic medium Mineral oil.

Sealings Nitrile (standard) and Viton on request.

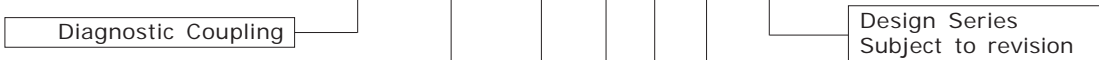
Temperature range

With metal cap (Standard) Sealing by Nitrile : -30 °C to +120 °C
 Viton : -20 °C to +200 °C

with Plastic cap (Optional) Sealing by Nitrile : -30 °C to +100 °C
 Viton : -20 °C to +100 °C

Ordering Code

MMC 1620 G02 E - P V - 20



Micro bore flex hose thread size	
M16 x 2.0	1620
M16 x 1.5	1615
Special threads 12 x 1.5	1215

Design Series
Subject to revision

Seal Material	
Omit	Nitrile
V	Viton

Stud ends	Code
ISO 228 - G 1/8	G01
ISO 228 - G 1/4	G02
ISO 228 - G 3/8	G03
M8 x 1.0	M8
M10 x 1.0	M10
M12 x 1.5	M12
M14 x 1.5	M14
M16 x 1.5	M16
7/16"-20 UNF	S04
9/16"-18 UNF	S06
1/8" NPTF	N01
1/4" NPTF	N02
ISO 7/1 - R1/8	R01
ISO 7/1 - R1/4	R02

Protective Cap	
Omit	Metal Cap
P	Plastic Cap

Stud end sealing	
E	Elastomeric seal
O	O' Ring

Note : Add prefix 316 to the existing part code for SS 316 Diagnostic coupling.
 e.g. **316-MMC1620G02E-20**